

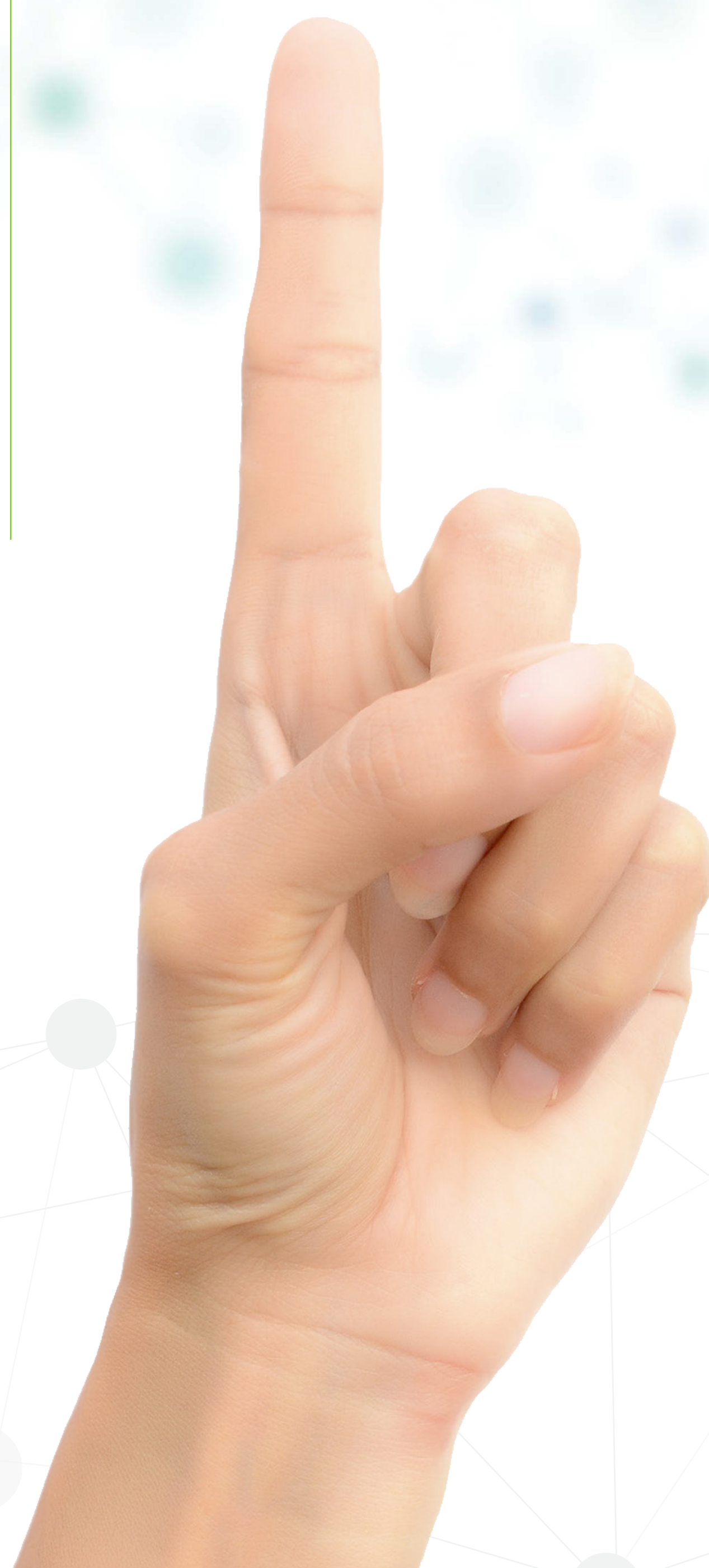
**natur
ethic**
Applied BioScience

Top Selling Product List

Il listino qui riportato non è esaustivo.
Il nostro elenco prodotti
viene spesso aggiornato.
In caso di richieste particolari su prodotti
o su attività cosmetiche non presenti in
queste pagine, contattateci agli indirizzi:
info@naturethic.es
info@pharmacosm.it



Innovation in green



Distributore esclusivo
per l'Italia:

PHARMA COSM POLLI SRL
Via Palermo, 9
20090 Assago
(MILANO) Italia
www.pharmacosm.it

NATURETHIC SL
9, Can Cabanes
08918 Rubi
(BARCELONA) Spain
www.naturethic.es



natur ethic

Applied BioScience

EN



-40%
heavy metals reduction
in 24 hours

Anti-pollution Ferment Natural evolution in a toxic world

Ancient, natural technology
against modern Air pollution

in vivo Studies

Antioxidant effect on skin
Heavy metals reduction
2.5µm particle filtering

Dosage

0.5 %

Regulatory

EU, FDA, JP
CH, KR



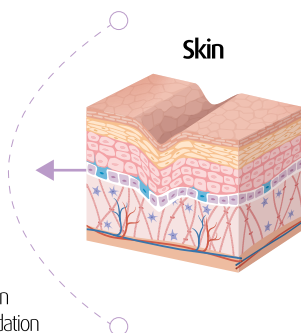
Air pollution is associated with adverse health effects and a major concern to dermatologists.

In many cases, the percutaneous absorption is equivalent to the respiratory uptake, emphasizing how important it is to recognize skin absorption in toxicology exposures. **Three major categories of pollutants can exert deleterious effects on the skin and the hair: gases, heavy metals and particles** (that are combustion residues onto which are absorbed very many organic compounds)

Environmental Air Pollution

Effects on skin

- **Heavy Metals** → Skin irritation
Inflammation
Allergies
- **Gases (O₃)** → Oxidation
- **Air Dust (PAHs)** → Skin irritation
Inflammation
Polycyclic Aromatic Hydrocarbons
- **Particulate Matter** → ROS generation
MMP generation
Collagen degradation



Efficacy against pollution harmful effects

Anti-inflammatory effect
Reduces heavy metals toxicity
Free radical scavenger
Protection against
lipoperoxidation
ATP synthesis booster
Antioxidant
Absorbs heavy metals
Anti-inflammatory effect
Collagen synthesis

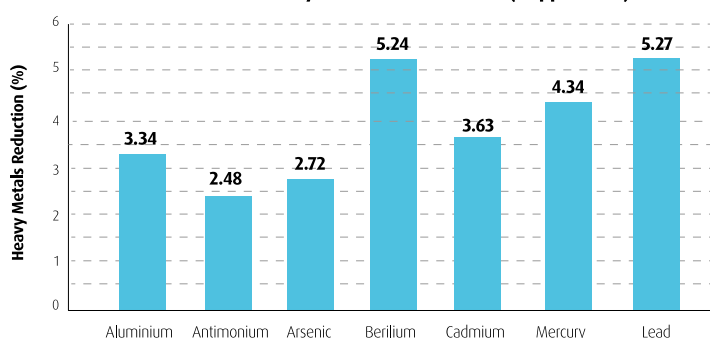
Anti-Pollution Ferment Active Ingredients

- **Moringa Olifera** (Extract)
- **Lapsana Communis** (Extract)
- **Bacopa Monnieri** (Extract)
- **Pichia Ferment**

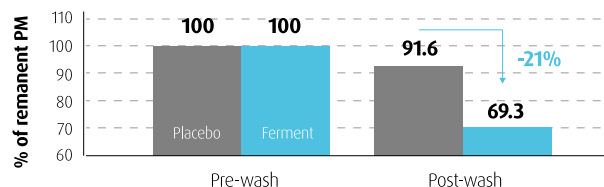
Efficacy* (in vivo)

* Additional in vitro and in vivo studies available

• Reduction of heavy metals after 24 hours (1 application)



• Protection against Particulate matter (2.5µm)



NATURETHIC
info@naturethic.es
www.naturethic.es

Product code: FE0002

INCI Nomenclature: GLYCERIN, PICHIA FERMENT LYSATE FILTRATE, BACOPA MONNIERI EXTRACT, LAPSANA COMMUNIS FLOWER/LEAF/STEM EXTRACT, MORINGA OLIFERA SEED EXTRACT Additives: NONE



eCapsules® ADC

Anti-dark circles

Infusing radiance
into the eye contour

Dark Under-Eye Circles (DUEC)

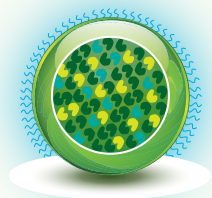
Dark circles are often referred to as **periorbital hypermelanosis**, reflecting the prominent role that **hyperpigmentation** plays in the **etiology of DUEC**. The two major causes of dark circles are: pigmented melanin (brown circles) and poor micro-circulation (blue circles).

Mechanism

eCapsules ADC® defies dark circles by helping to visibly fade existing pigmentation. By disposal and scavenging of Heme group which is essential in the removal of dark circles under the eyes and, additionally, improving skin micro-circulation.

Chlorella Vulgaris extract is a key inducer of the HO-1 that stimulates Heme group degradation.

Capsule structure



- Cocoa butter**
Antioxidant, anti-inflammatory
- Ascophyllum nodosum extract**
Boosts skin microcirculation
- Vitis vinifera (Grape) seed oil**
Antioxidant, free radical scavenger
- Chlorella Vulgaris extract**
Antioxidant, improves skin microcirculation

in vitro key studies

Stimulation of HO-1
Antioxidant activity

Technology

eCapsules®

in vivo efficacy

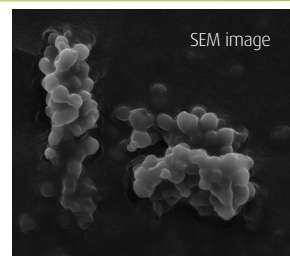
15 Caucasian females
35-60 years old
2 applications per day
Active or placebo
Data at D0 & D28

Dosage

2% liquid suspension

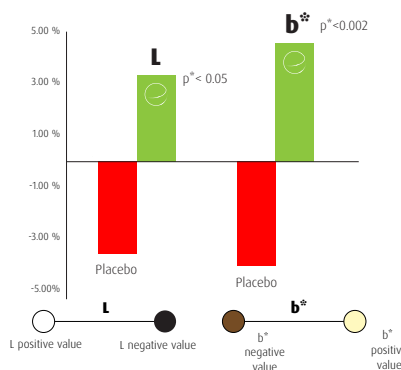
Regulatory

EU, FDA, JP
CH, KR



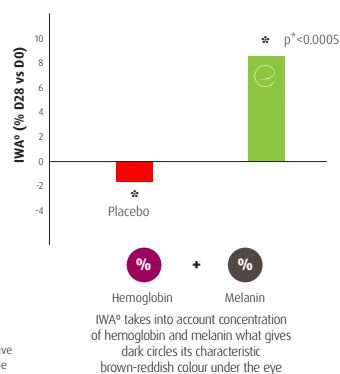
1 Lightening effect

Values of L and b*
Higher L, lighter skin. Higher b*, fairer skin

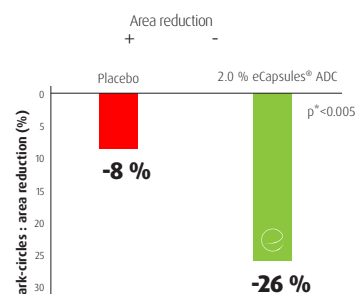


2 IWA°

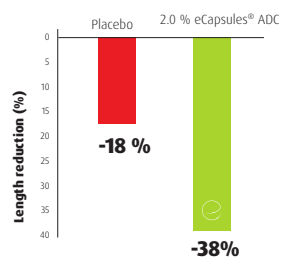
Individual Whiteness Angle
The higher IWA° value, the lighter the skin is.



3 Dark circles reduction



4 Anti-wrinkle effect



5 DUEC reduction (colour)



innovation in green



NATURETHIC SL
info@naturethic.es
www.naturethic.es





Healerine[®]

Nature's ancient elixir to healing

Biofermented Skin Care

Speed up skin's natural re-epithelization, regeneration, healing properties and avoid further imperfections and residual marks



Quicker Skin Regeneration
After Injury



Accelerated Skin Healing
Skin Imperfections
Residual Marks

RE-EPITHELIZATION

Regeneration, regrowth
of thin epidermal layer



B2B information

NATURETHIC
Can Parellada 22 n 2-3
MONTORNES DEL VALLES
08170 BARCELONA (Spain)
info@naturethic.es



naturethic.es

Healerine® is a cosmetic ferment. A solution obtained from Ganoderma Lucidum (Reishi) fermentation, a rare fungi with amazing healing properties used in Asian traditional medicine for more than 2000 years. **It speeds up natural epidermal regeneration** (epithelization) **up to 6 days** (time to recover skin barrier function after injury), **improves skin integrity and increases optimum moisturizing levels in skin.**

FERMENT FILTRATE

REISHI : THE ELIXIR OF SKIN



Ganoderma Lucidum (Reishi) Mushroom

RICH CHEMICAL COMPOSITION

1. Triterpenes :

Precursors of cell membrane molecules
Improve and support skin barrier function

2. β -glucans :

Antioxidant effect. Wound healing
Moisturizing activity

3. FIP (Fungal Immunomodulatory Proteins) :

Support correct immune system response

GENE EXPRESSION

Technique : DNA Microarray

4

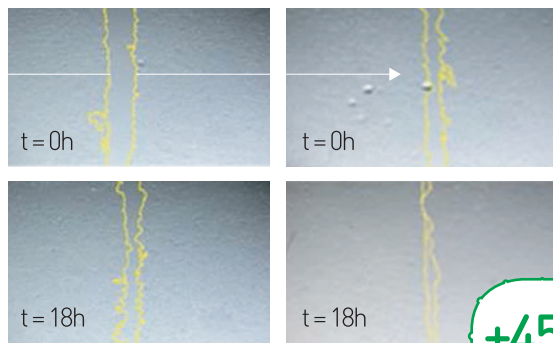
TISSUE REGENERATION
UPREGULATED GENES

TISSUE REGENERATION
BOOSTING CAPABILITY

RE-EPITHELIZATION

Control

Healerine®



IN VITRO RELATIVE WOUND HEALING

+45
%

Technique: Human keratinocytes (Monolayer). Positive control : EGF Scratch Protocol (2mm scratch)
Concentration : 0.1% Healerine® t = 18 hours. Pictures and image analysis

IN VIVO STUDIES

1. WOUND HEALING (Injury induced by laser)

Technique : 10 μ m depth and 5mm wide.

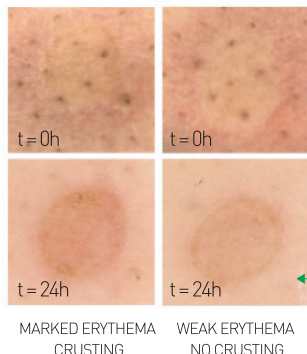
Controlled by placebo. Laser ablative lesion images.

1
%

ACTIVE

Placebo

Healerine®



-21
%
WOUND VOLUME

-62
%
WOUND MEAN DEPTH

-21
%
WOUND ϕ

-130
%
WOUND MAX DEPTH

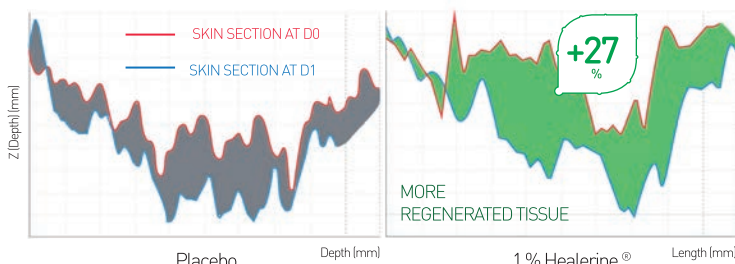
-40
%
WOUND AREA

MARKED ERYTHEMA
CRUSTING

WEAK ERYTHEMA
NO CRUSTING

2. SKIN MICROSTRUCTURES 3-D ANALYSIS

Technique : 3D Image Analysis with FOITS (Fast Optical In vivo Topometry of human Skin)



3. SKIN BARRIER FUNCTION RECOVERY AFTER INSULT (Placebo controlled)

Technique : SLS Patch test reaction . Chemical : 2% SLS (24 h exposure)

PRODUCT DESCRIPTION

INCI : WATER (AQUA), GANODERMA LUCIDUM EXTRACT,
GLYCERIN, PROPANEDIOL, XANTHAN GUM

Additives : 1,2-HEXANEDIOL, CAPRYLYL GLYCOL

Appearance : Whitish to ivory viscous suspension

Solubility : Dispersible in water and in O/W, W/O emulsions

Formulation : It should be incorporated at the end
of the formulation at a temperature <40°C

Recommended dosage : 1%

pH : 4.0 - 8.0



1
%

ACTIVE

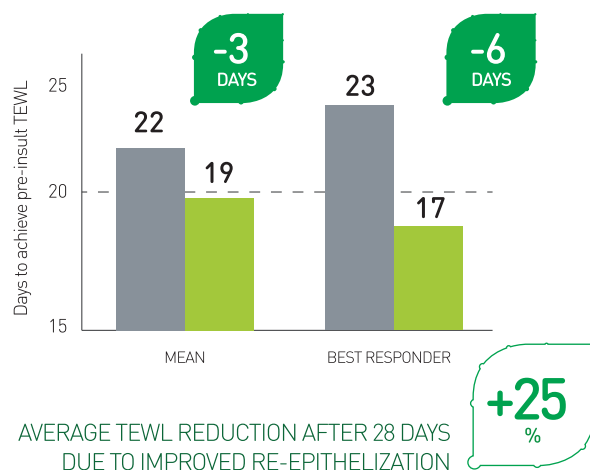
5
18 - 65 YRS

BACK

28
DAYS

Skin Re-epithelization

(time to recover skin barrier function = D0)





PH4 Natural Lifting Ferment

Hidden Beauty Secrets
of Yosemite

**A natural and visible
skin firming effect**

Technology
Fermentation

in-vivo study

Skin firming
Skin texture / roughness
Elasticity
Digital photography

Dosage

0.5 %

Regulatory

EU, FDA, JP
CH, KR



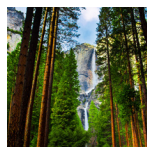
Fermentation

It has been well documented that extracts from yeast fermentation have demonstrated wound healing properties

Fermentation is one of the best ways to provide our skin with a countless bioavailable molecules, such as amino acids and antioxidants **

** This fascinating combination of nutrients in the extract improves the firmness, the elasticity and the texture of the skin contributing overall to a better condition of the tissue and an improved appearance, giving your skin the essential for an instant beauty

① Strain origin

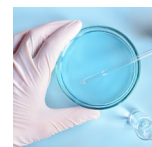


The strain was found at the Yosemite National Park (CA) U.S.

Rich in biological diversity, it is considered a scientific laboratory of hydrology, geology and glaciology, amongst other sciences.

It is home of sequoia groves and other centennial trees.

② Culturing yeasts



PH4 Ferment is obtained by high-quality yeasts culture, and developed to give nutrients, vitamins, amino acids and enzymes to skin.

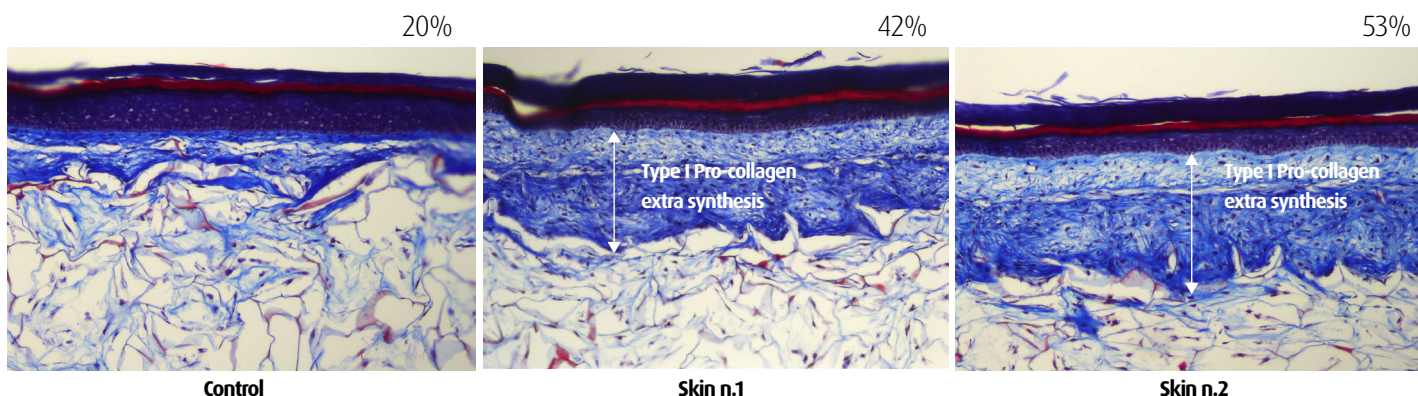
③ Science applied to strains

PH4 Ferment is treated under optimum cultured conditions to improve skin's elasticity due to its potent effect on collagen synthesis.

PH4 (Prolyl 4-Hydroxylase) enzyme is what makes this yeast unique, because (not only) stimulates collagen fibers synthesis, but also improves their stability. In collagen and other related proteins, PH4 catalyses 4-hydroxyproline formation which is essential in new-born pro-collagen chain's tri-dimensional folding and assembly.

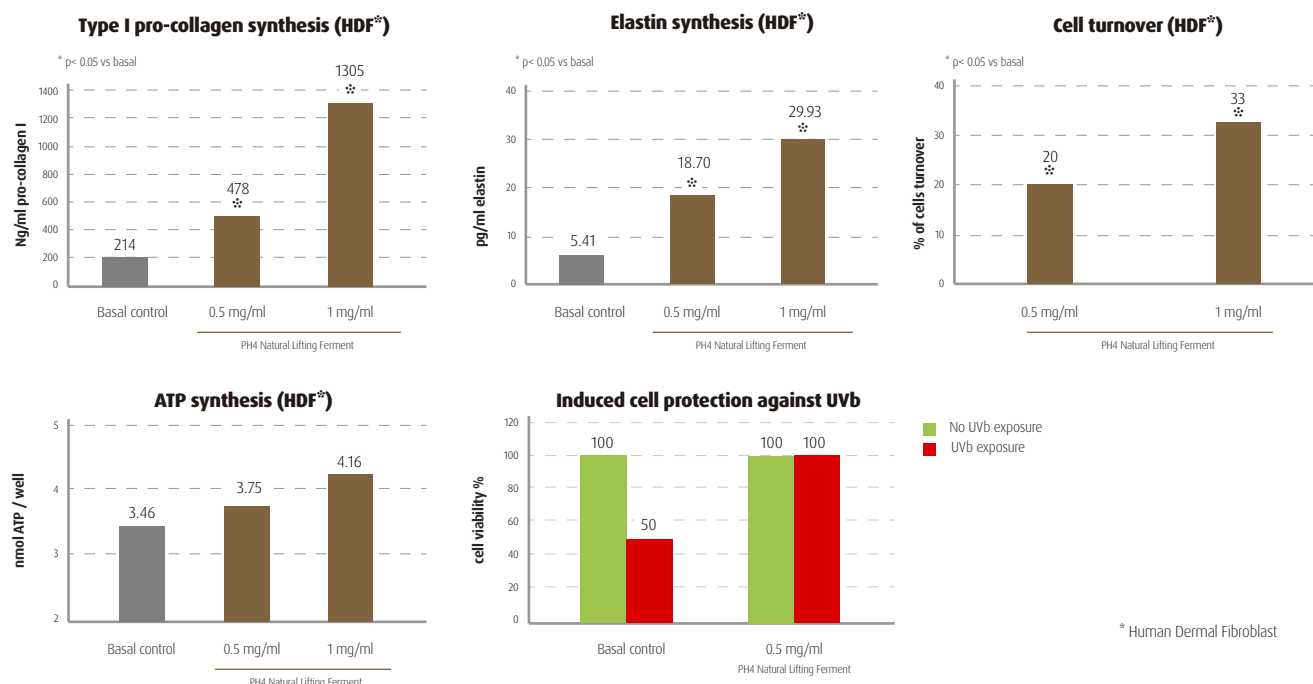
④ ex-vivo test: effects of skin (reconstructed)

3 days application (10µl 0.5%/skin) + 3 days incubation. Results expressed in type I pro-collagen (blue staining)





5 in-vitro test: effects on collagen, elastin & ATP synthesis by HDF*. Cell turnover and protection



5 in-vivo test: skin firming effect, elasticity and skin texture. Digital photography

Clinical study design: In-use, pre-established randomized pattern, double-blinded, comparative, placebo-controlled study.

Formulation A (0.5% active) versus Formulation B (placebo)
Half-face and neck application, twice daily (morning and evening)

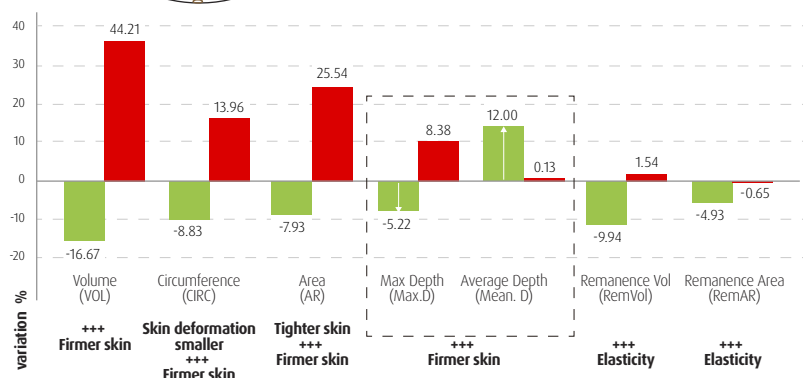
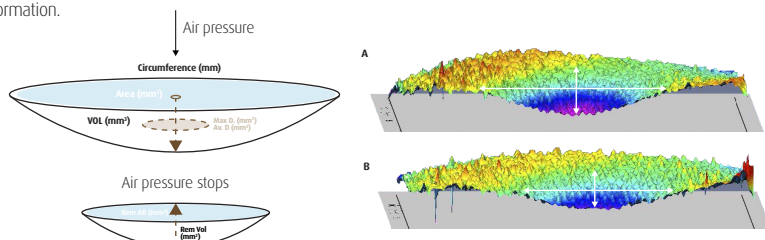
Clinical evaluation: 28 days and 20 subjects (healthy women)
34-69 years old

Evaluation performed using :

- Clinical Photography
- FOITS Texture Analysis (Fast Optical In vivo Topography of Human Skin)
- DynaSkin (Firmness and Elasticity Evaluation)

Skin firmness and elasticity analysis (Dynaskin technique)

Protocol: The principle of this technique consists in blowing a pressured-controlled airflow over the skin (2g in this case) in order to cause a deformation in the skin that will be proportional to its firmness (the firmer a tissue the less it is deformed by a constant force). This is carried out during the FOITS analysis, thus obtaining a 3D capture of the deformation.



Conclusions:

9 out of the 11 evaluated parameters presented a statistically significant or very significant improvement after only 28 days, including the main ones for each category, therefore we can conclude that PH4 Natural Lifting Ferment in a cosmetic formulation improves the firmness, the elasticity and the texture of the skin contributing overall to a better condition of the tissue and an improved appearance.

Product data :

Code: FE0001 **INCI Name:** GLYCERIN, PICHIA FERMENT LYSATE FILTRATE **Additives:** NONE
Typical properties: **Appearance :** Clear liquid solution **Colour :** Colourless to yellowish **Odour :** Characteristic
Solubility : Soluble in water **pH :** 5.5 -7.5 **Recommended Use Level :** 0.5% **Protein content level :** 0.7 - 0.8 mg/ml

innovation in green



NATURETHIC
info@naturethics.es
www.naturethics.es



natur ethic

Applied BioScience

Top Selling Product List

Il listino qui riportato non è esaustivo.
Il nostro elenco prodotti
viene spesso aggiornato.
In caso di richieste particolari su prodotti
o su attività cosmetiche non presenti in
queste pagine, contattateci agli indirizzi:
info@naturethic.es
info@pharmacosm.it



Distributore esclusivo
per l'Italia:

PHARMA COSM POLLI SRL
Via Palermo, 9
20090 Assago
(MILANO) Italia
www.pharmacosm.it

NATURETHIC SL
9, Can Cabanes
08918 Rubi
(BARCELONA) Spain
www.naturethic.es

Innovation in green